

DRIVE SYSTEM(ECCENTRIC/DRIVE ARM)

NOTE: THE REMOVAL OF THE NAMEPLATE IS NOT REQUIRED TO ACCESS THE INTERNAL COMPONENTS OF THE CLIPPER

STEP 1: REMOVE THE BLADE SET

LOOKING INWARD FROM THE BOTTOM SIDE OF THE CLIPPER, THE TWO PHILLIPS HEAD SCREWS EXPOSED ABOVE THE ZINC MOTOR HOUSING HOLD THE NAMEPLATE ON. REMOVE THE TWO PHILLIPS HEAD SCREWS

STEP 2:

REMOVING NAMEPLATE EXPOSES THE DRIVE ARM AND ECCENTRIC DRIVE

NOTE: SIDE SEAL AND TOP SEAL FOAM PARTS ARE NOT PERMANENTLY ATTACHED AND CAN FALL OUT WITH THE NAMEPLATE REMOVED.

STEP 4: REASSEMBLE NEW DRIVE SYSTEM IN REVERSE ORDER.

STEP 5: REMOVE E-CLIP BY PUSHING OUT WITH FINGERNAIL.

PULL UP DRIVE LEVER BY PINCHING BETWEEN THUMB AND INDEX

STEP 6: FINGER

STEP 7: REASSEMBLE NEW DRIVE SYSTEM IN REVERSE ORDER.



NAMEPLATE

STEP 1: INSPECT AND IF DAMAGED REPLACE

STEP 2: REMOVE THE BLADE SET

STEP 3: REMOVE 2 SCREWS

STEP 4: RE-USE OR REPLACE FOAM INSERTS

SLIDE TAB AT BOTTOM OF NAMEPLATE INTO SLOT IN HOUSING THEN

STEP 5: PUSH TO CLOSE AND SECURE SCREWS

STEP 6: REASSEMBLE NEW NAMEPLATE IN REVERSE ORDER.



HOUSING / INTERIOR

NOTE: TO ACHIEVE ACCESS TO THE CLIPPER INTERIOR FOLLOW STEPS 1-4

STEP 1: REMOVE THE BLADE SET

UNSCREW THE FOUR PHILLIPS HEAD SCREWS THAT ARE INSERTED

STEP 2: FROM THE LOWER HOUSING

REMOVE THE HANG HOOK AND ROLL THE HOUSING OVER TO THE FRONT.

STEP 3:

GENTLY SEPARATE THE TWO HALVES OF THE HOUSING, STARTING FROM THE CORE STRAIN RELIEF, TO EXPOSE THE MOTOR/PCB/CORD

STEP 4: ASM.



NOTE:THE CORD STRESS RELIEF IS INSTALLED INTO THE OPPOSITE HOUSING AS THE PCB. USE CARE TO NOT DAMAGE LEAD WIRES.

STEP 5: INSPECT AND (IF DAMAGED) REPLACE

STEP 6: REUSE OR REPLACE VIBRATION INSULATORS

STEP 7: REASSEMBLE NEW HOUSING IN REVERSE ORDER.

NOTE: PUSH SWITCH INTO OFF POSITION TO PUT COVER BACK ON.



PCB ("PRINTED CIRCUIT BOARD")

STEP 1: REFER TO HOUSING REMOVAL INSTRUCTION.S

STEP 2: REMOVE (2) MOTOR LEAD TERMINAL(S)

NOTE: WE RECOMMEND YOU USE A FLAT SCREW DRIVER TO PRY THE TERMINALS OFF OF THE PCB.

REMOVE ONE PHILLIPS HEAD SCREW TO RELEASE THE

STEP 3: MOTOR/PCB/CORD SET ASM

STEP 4: REMOVE THE TWO CORD WIRE LEAD TERMINALS

STEP 5: REMOVE THE PCB FROM THE LOWER HOUSING

NOTE: MAKE SURE TO ATTACH THE LEFT LEAD TERMINAL ON THE LEFT SIDE AND THE RIGHT LEAD TERMINAL ON THE RIGHT SIDE.

STEP 6: REASSEMBLE NEW PCB IN REVERSE ORDER.

NOTE: THERE ARE TWO SPEED SETTINGS FOR THE PCB; HIGH (MARKED 09) FOR 78006 AND LOW (MARKED 10) FOR 76175



CARBON BRUSH REPLACEMENT

STEP 1: REMOVE THE BRUSHES BY RELEASING A COPPER CLIP

STEP 2: SLIDE THE BRUSH OUT OF THE BRUSH TUBE

STEP 3: INSPECT AND (IF DAMAGED) REPLACE

NOTE: THERE IS A BRUSH TENSION SPRING THAT NEEDS TO BE USED WHEN THE BRUSHES ARE REPLACED.

STEP 4: REASSEMBLE NEW CARBON BRUSH REPLACEMENT IN REVERSE ORDER.

NOTE: SPRING NEEDS TO BE PLACED ON INDETION OF THE CLIP WHEN REASSEMBLING.



POWER CORD

STEP 1: INSPECT AND (IF DAMAGED) REPLACE

STEP 2: REMOVE LEADS FROM PCB

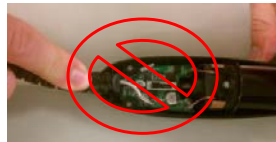
STEP 3: REMOVE CORD ASSEMBLY

STEP 4: PRESS STRAIN RELIEF INTO HOUSING AND REATTACH LEADS

STEP 5: REASSEMBLE NEW POWER CORD REPLACEMENT IN REVERSE ORDER.

NOTE: SQUARE PIECE GOES ON TOP; ROUND PIECE IS FACE DOWN.

NOTE: CONNECT THE WHITE LEAD FROM THE CORD TO THE RIGHT SIDE OF THE



HINGE ASSEMBLY

STEP 1: REMOVE THE BLADE SET

STEP 2: REMOVE 2 SCREWS

STEP 3: PULL OUT HINGE ASSEMBLY

STEP 4: PULL OUT LATCH

DIP SCREW THREADS IN LOCTITE 222 BEFORE RE-ASSEMBLING AND

STEP 5: SECURING HINGE ASSEMBLY.

STEP 6: INSPECT AND (IF DAMAGED) REPLACE

STEP 7: REASSEMBLE NEW HINGE ASSEMBLY REPLACEMENT IN REVERSE ORDER.



MOTOR ASSEMBLY

STEP 1: REMOVE THE BLADE SET

UNSCREW THE FOUR PHILLIPS HEAD SCREWS THAT ARE INSERTED

STEP 2: FROM THE LOWER HOUSING

GENTLY SEPARATE THE TWO HALVES OF THE HOUSING TO EXPOSE THE

MOTOR/PCB/CORD ASM (NOTE:THE CORD STRESS RELIEF IS

STEP 3: INSTALLED INTO THE OPPOSITE HOUSING AS THE PCB.)

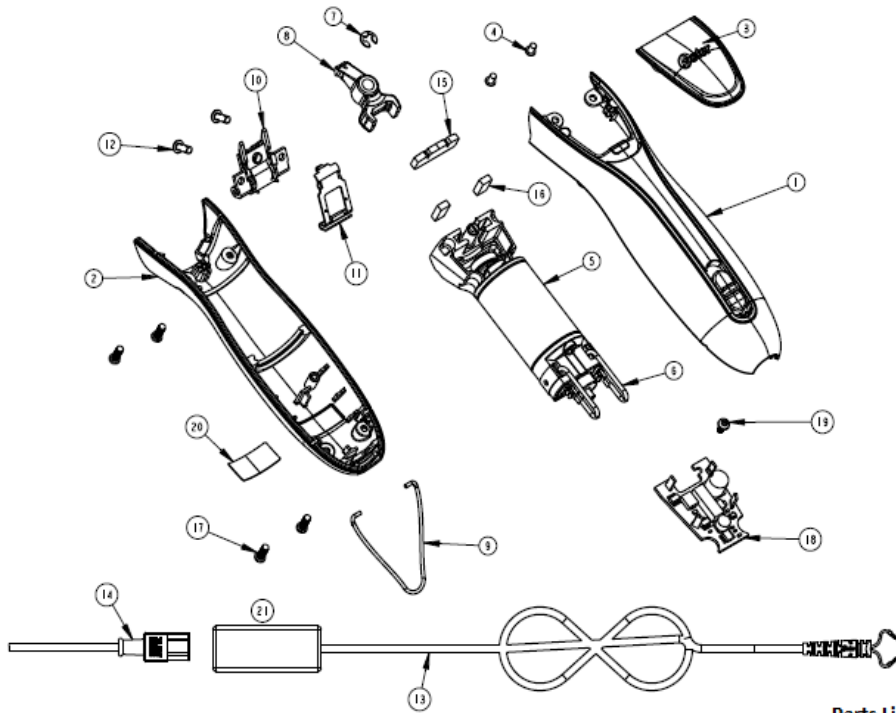
STEP 4: REMOVE THE HANG HOOK.

STEP 5: INSPECT AND (IF DAMAGED) REPLACE






STEP 6: REUSE OR REPLACE VIBRATION INSULATORS

STEP 7: REASSEMBLE NEW MOTOR ASSEMBLY REPLACEMENT IN REVERSE ORDER.





Parts List
A6 Comfort Schematics and Spare Parts

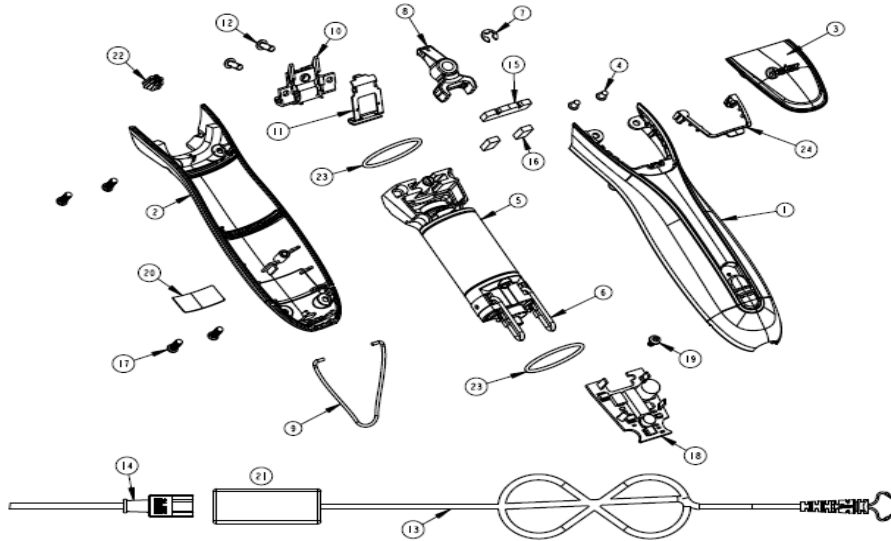
Parts List				
A6 Comfort Schematics and Spare Parts				
ITEM	DESCRIPTION	PART NUMBER	REFERENCE PHOTO	PART INCLUDES
1A	International Top Housing Assembly A6 Comfort 078006-000	163300-000-000		<ul style="list-style-type: none"> • 1 Upper Teal Housing • Insert Trim • Screws • ON/OFF Button • Switch Parts
2A	International Bottom Housing Assembly A6 Comfort 078006-000	153655-100-000		<ul style="list-style-type: none"> • 1 Bottom Housing
3A	Nameplate Assembly 078006-000	153650-000-003		<ul style="list-style-type: none"> • 1 Face Plate with 2 Overmolded Inserts • Dark Chrome Finish
4	Screw M3-.5 X 5MM PHILIPS Type 078006-000	153264-000-000		<ul style="list-style-type: none"> • 2 Badge Screws M3-.5 X 5MM PHILIPS TYPE
5	Motor Assembly 078006-000	153660-000-000		<ul style="list-style-type: none"> • 1 Motor Assembly • 1 Pivot Pin • 1 Eccentric Bearing • 1 Bearing Clip

Parts List

A6 Comfort Schematics and Spare Parts

ITEM	DESCRIPTION	PART NUMBER	REFERENCE PHOTO	PART INCLUDES
6	Replacement Carbon Brush Kit 078006-000	163299-000-000		<ul style="list-style-type: none"> • 1 Carbon Brush • 1 Spring
7	E-Clip 3/16" 078006-000	153667-000-000		<ul style="list-style-type: none"> • 1 Drive Lever Clip
8	Drive Lever 078006-000	153674-100-000		<ul style="list-style-type: none"> • 1 Drive Arm
9	Hang Hook 078006-000	153676-000-000		<ul style="list-style-type: none"> • 1 Hang Hook
10	Blade Mounting Plate Assembly 078006-000	044941-000-000		<ul style="list-style-type: none"> • Blade Hinge Assembly with the Lock
11	Blade Locking Latch 078006-000	044938-000-000		<ul style="list-style-type: none"> • 1 Lock for Blade Hinge Assembly
12	Philips Type Screw 078006-000	041664-000-000		<ul style="list-style-type: none"> • 2 Screws
13	Power cord 12 ft 078006-000	153668-000-000		<ul style="list-style-type: none"> • 1 12 ft Power Cord includes AC/DC connector
14A	Plug, EU 078006-000-051	159501-000-000		<ul style="list-style-type: none"> • 1 DC Connector

Parts List				
A6 Comfort Schematics and Spare Parts				
ITEM	DESCRIPTION	PART NUMBER	REFERENCE PHOTO	PART INCLUDES
14B	Plug,UK 078006-000-600	159500-000-000		• 1 DC Connector
15	Nameplate Seal 078006-000	153658-002-000		• 1 Face Plate Seal
16	2 - Seal, Side 078006-000	153658-001-000		• 2 Side Seals
17	#5 Hi-Low Screw - 0.5 Long Philips Type 078006-000	159822-000-000		• 4 - #5 Hi-Low Screw - 0.5 Long
18	PCB Assembly 078006-000	163465-000-000		• 1 PCB Board, high speed
19	Screw, #4 Self- tapping, PH, Philips Type 078006-000	84026-606-000		• Screw, #4 Self- tapping, PH, Phil
20A	Warning Label Europe 078006-000-051	153677-000-051		• Warning label
20B	Warning Label UK 078006-000-600	153677-000-600		• Warning label



Parts List
A6 Slim Schematics and Spare Parts

2013 Parts List				
A6 Slim Schematics and Spare Parts				
ITEM	DESCRIPTION	PART NUMBER	REFERENCE PHOTO	PART INCLUDES
1B	International Top Housing Assembly A6 Slim 078006-150	163301-000-000		<ul style="list-style-type: none"> • 1 Upper Black Housing • Insert Trim • ON/OFF Button • Switch Parts • 2 Small Cube Foam
2B	International Bottom Housing Assembly A6 Slim 078006-150	163464-000-000		<ul style="list-style-type: none"> • 1 Bottom Housing • Foam Seal
3B	Nameplate Assembly 078006-150	153650-000-002		<ul style="list-style-type: none"> • 1 Face Plate with 2 Overmolded Inserts • Bright Chrome Finish
4	Screw M3-.5 X 5MM PHILIPS Type 078006-150	153264-000-000		<ul style="list-style-type: none"> • 2 Badge Screws M3-.5 X 5MM PHILIPS TYPE
5	Motor Assembly 078006-150	153660-000-000		<ul style="list-style-type: none"> • 1 Motor Assembly • 1 Pivot Pin • 1 Eccentric Bearing • 1 Bearing Clip
6	Replacement Carbon Brush Kit 078006-150	163299-000-000		<ul style="list-style-type: none"> • 1 Carbon Brush • 1 Spring

2013 Parts List

A6 Slim Schematics and Spare Parts

ITEM	DESCRIPTION	PART NUMBER	REFERENCE PHOTO	PART INCLUDES
7	E-Clip 3/16" 078006-150	153667-000-000		• 1 Drive Lever Clip
8	Drive Lever 078006-150	153674-100-000		• 1 Drive Arm
9	Hang Hook 078006-150	153676-000-000		• 1 Hang Hook
10	Blade Mounting Plate Assembly 078006-150	044941-000-000		• Blade Hinge Assembly with the Lock
11	Blade Locking Latch 078006-150	044938-000-000		• 1 Lock for Blade Hinge Assembly
12	Philips Type Screw 078006-150	041664-000-000		• 2 Screws
13	Power cord 12 ft 078006-150	153668-000-000		• 1 12 ft Power Cord includes AC/DC connector
14A	Plug, EU 078006-150-051	159501-000-000		• 1 DC Connector
14B	Plug, UK 078006-150-600	159500-000-000		• 1 DC Connector

2013 Parts List

A6 Slim Schematics and Spare Parts

ITEM	DESCRIPTION	PART NUMBER	REFERENCE PHOTO	PART INCLUDES
15	Nameplate Seal 078006-150	153658-002-000		• 1 Face Plate Seal
16	2 - Seal, Side 078006-150	153658-001-000		• 2 Side Seals
17	#5 Hi-Low Screw - 0.5 Long Philips Type 078006-150	159822-000-000		• 4 - #5 Hi-Low Screw - 0.5 Long
18	PCB Assembly 078006-150	163465-000-000		• 1 PCB Board, high speed
19	Screw, #4 Self- tapping, PH, Philips Type 078006-150	84026-606-000		• Screw, #4 Self- tapping, PH, Phil
20A	Warning Label Europe 078006-150-051	153677-150-051		• Warning label
20B	Warning Label UK 078006-150-600	153677-150-600		• Warning label
22	Bottom Housing, Motor Seal 078006-150	153657-000-000		• 1 Motor Seal
23	Motor O Ring 078006-150	159463-000-000		• 1 Rubber O-ring
24	Nameplate Seal 078006-150	153654-000-000		• 1 Hood Seal