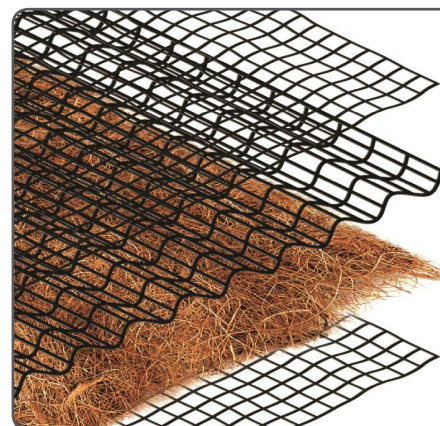


Terra-Lock® G-MAT C550 is a lightweight, long-lasting, environmentally friendly, tough and flexible reinforced erosion control mat that provides both an effective erosion control surface and a vegetative root reinforcement layer.

FEATURES / BENEFITS

- Up to 10 times faster than traditional methods
- These composite Turf Reinforcement Mats (TRM) provide long-term erosion protection and vegetation establishment assistance while permanently reinforcing vegetation
- Matrix made of 100% coconut fiber
- Top and bottom netting made of UV-stabilized polypropylene and middle, corrugated UV-stabilized polypropylene



SPECIFICATION

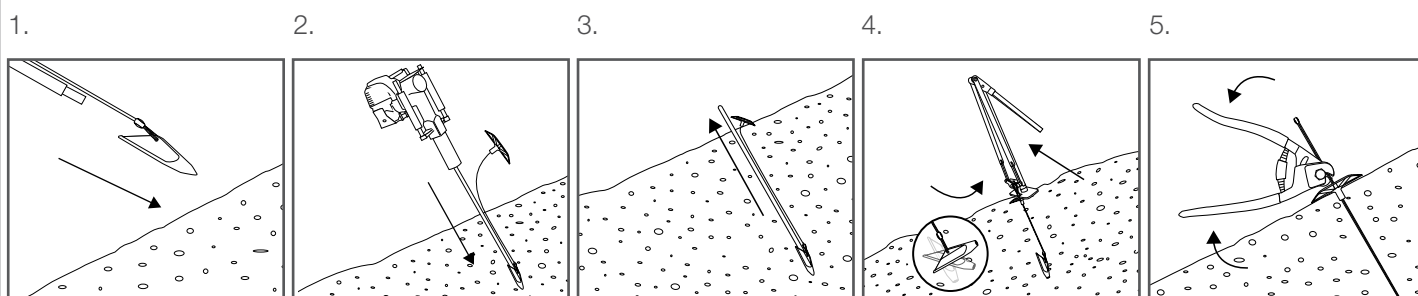
Properties	
Part code	G-MAT-C550
Mass/Unit Area	700 g/m ²
Tensile Strength MD	14,2 kN/m
Tensile Strength CMD	14,1 kN/m
Flow Velocities (m/s)	3,8 (unvegetated) to 7,6 (fully vegetated)
Elongation	15,3 %
Thickness	22 mm
Overlap Allowance	6%
Covering surface	30 m ²

Tensile strengths are in accordance with the norm EN ISO 10319: 2008-10

Roll dimensions	
Width	2 m
Length	15 m
Weight	22,5 kg
Diameter	0,5 m

The above figures are based on average values. Subject to change.
The longevity depends on location factors, soil, water, and climate conditions as well as on the local risk of erosion on site.
For anchoring recommendations please contact Gripple.

INSTALLATION



For more information on how to install the Terra-Lock system visit our YouTube channel - GrippleTV.
Alternatively see Installation Guidelines & Procedures.

INSTALLATION TOOLS



For more information contact us or visit our website - www.gripple.com

ANCHORING SOLUTION



For load capacity please refer to the SPT technical sheet information.

