



*Supporting Farmers with Innovative Solutions*

## Nose Fill Heated Drink Bowl Technical Specification





# Heated Drink Bowl

DBL8-H Technical Specification

*Supporting Farmers with Innovative Solutions*

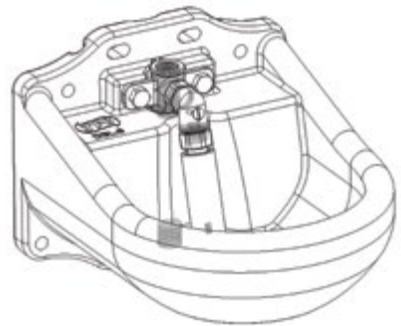
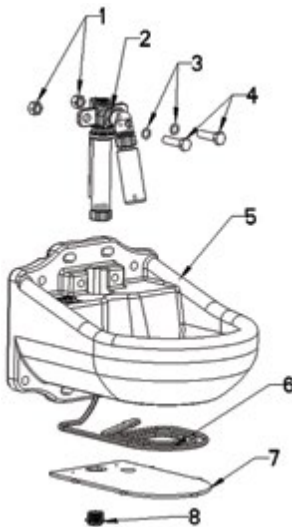
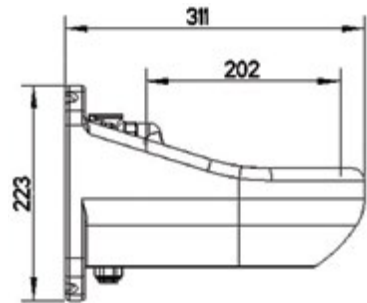
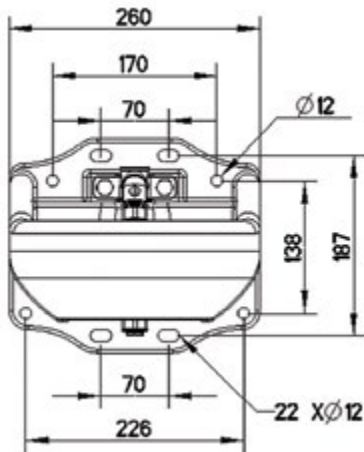
Code	Description
DBL8-H	Nose Fill Heated Drink Bowl
EPS100W*	Electronic Power Supply 230/24VDC 100W*
EPS400W*	Electronic Power Supply 230/24VDC 400W*
DTC1	Digital Temperature Controller
DBL8-PPC	Pipe Protection Cover
HC15W	3m Pipe Heating Cable 24vDC 15w [1.4m Hot & 1.6m Cold]



Application:	Cattle / Horses
Valve Connection:	½" BSP
Valve Entry:	Top & Bottom Entry
Valve Type:	Nose Activated
Min-Max Pressure	1.5 - 8 Bar
Flow (4 bar)	Approx. 9 l/min
Flow (2 bar)	Approx. 6 l/min
Dimensions:	311mm Long x 260mm Wide x 233mm high
Material:	Polyethylene
Frost Protection:	Max. – 30°C
Heating Cable:	24VDC / 30W
Optional Extras:	Electronic power supply, Digital Temperature Controller, Pipe Heating Cable and Pipe Protection Cover

\*Note: See page 3-5 for selection of electronic power supply





Item	Description	Qty
1	M10 Hex Nuts	2
2	Nose Fill Valve	1
3	M10 Washers	2
4	Socket Button Head Bolts M10 X 50	2
5	DBL8 Bowl	1
6	Heated Cable	2
7	Base Plate	1
8	Blank Cap	1

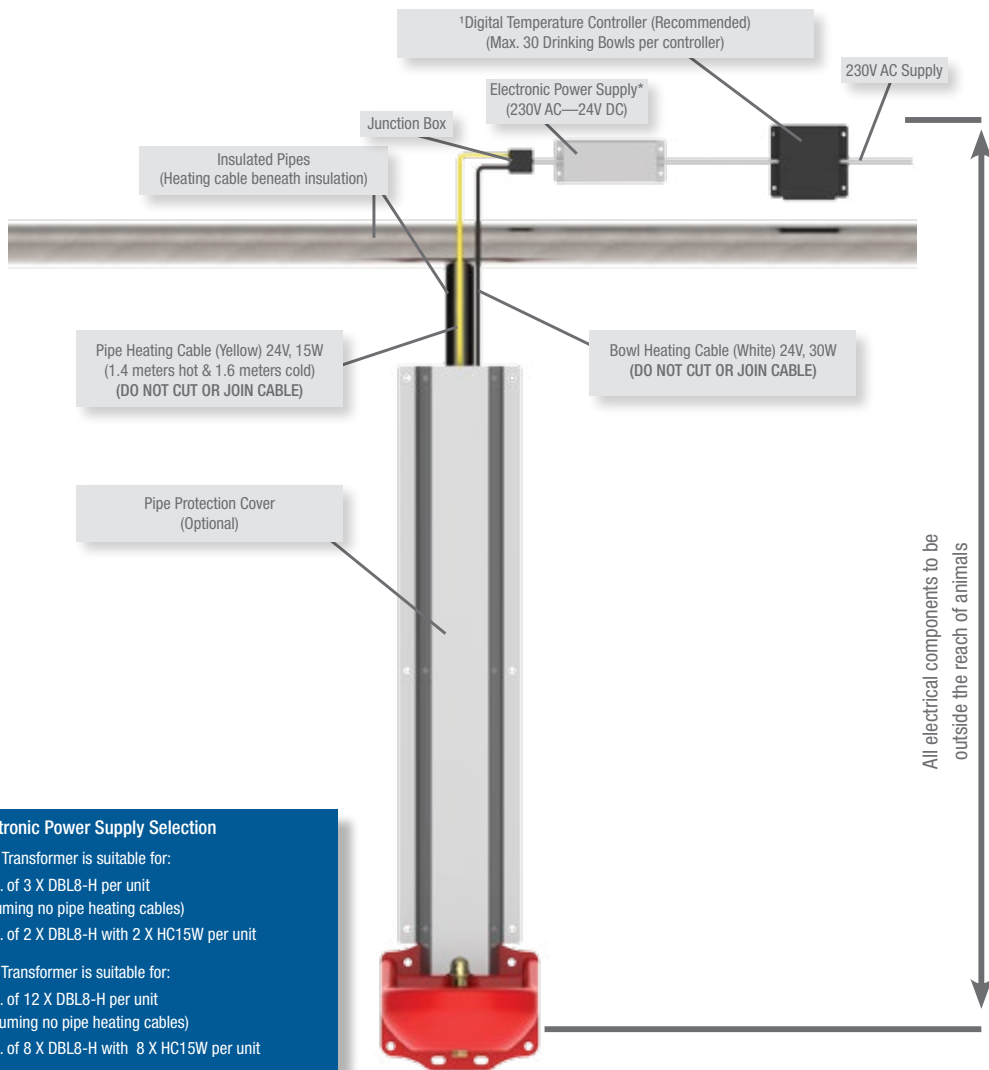


# Heated Drink Bowl

DBL8-H Installation - Option 1

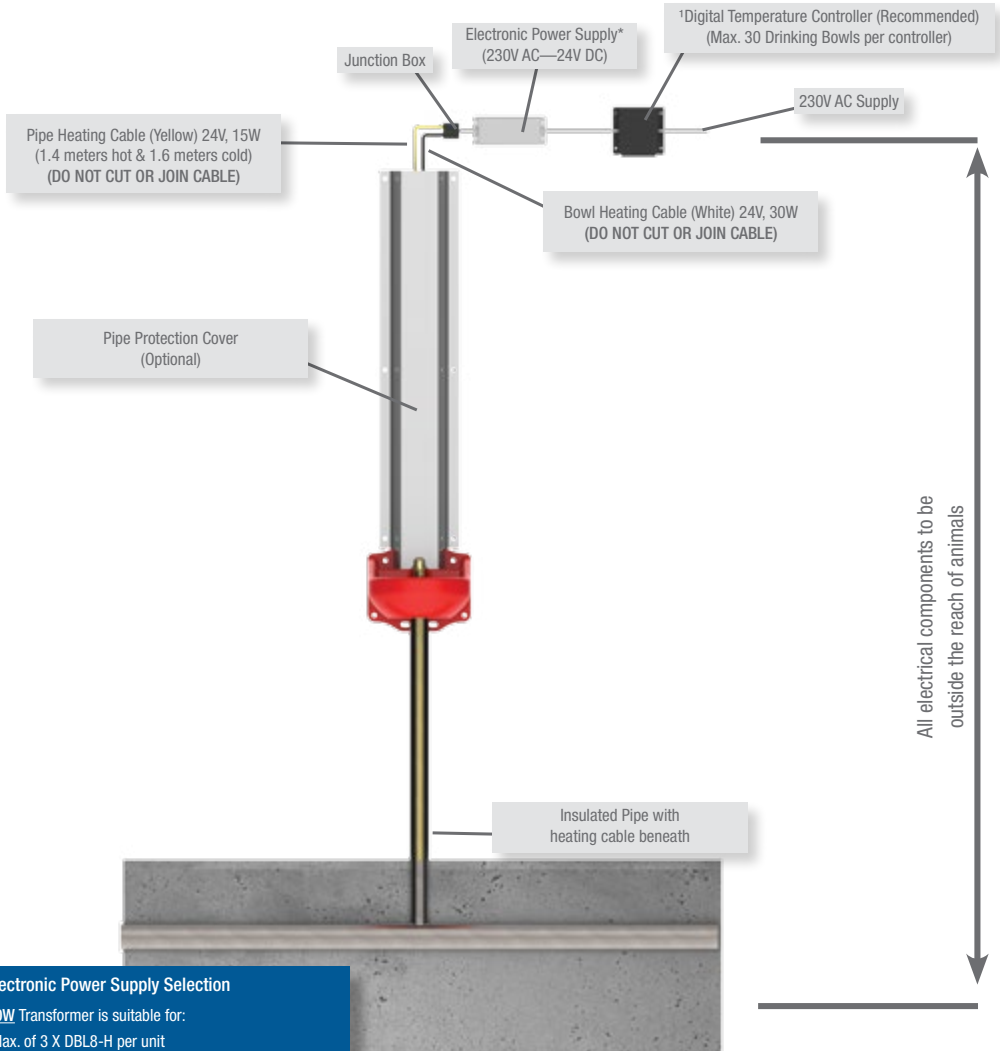
*Supporting Farmers with Innovative Solutions*

## Top Entry Water Connection



<sup>1</sup>Digital Temperature Controller will turn on and off the heating element based on the ambient temperature. If this is not used the system can be controlled manually but JFC take no responsibility for any damage caused by overheating cables.

## Bottom Entry Water Connection

**\*Electronic Power Supply Selection**

100W Transformer is suitable for:

- Max. of 3 X DBL8-H per unit (assuming no pipe heating cables)
- Max. of 2 X DBL8-H with 2 X HC15W per unit

400W Transformer is suitable for:

- Max. of 12 X DBL8-H per unit (assuming no pipe heating cables)
- Max. of 8 X DBL8-H with 8 X HC15W per unit

<sup>1</sup>Digital Temperature Controller will turn on and off the heating element based on the ambient temperature. If this is not used the system can be controlled manually but JFC take no responsibility for any damage caused by overheating cables.

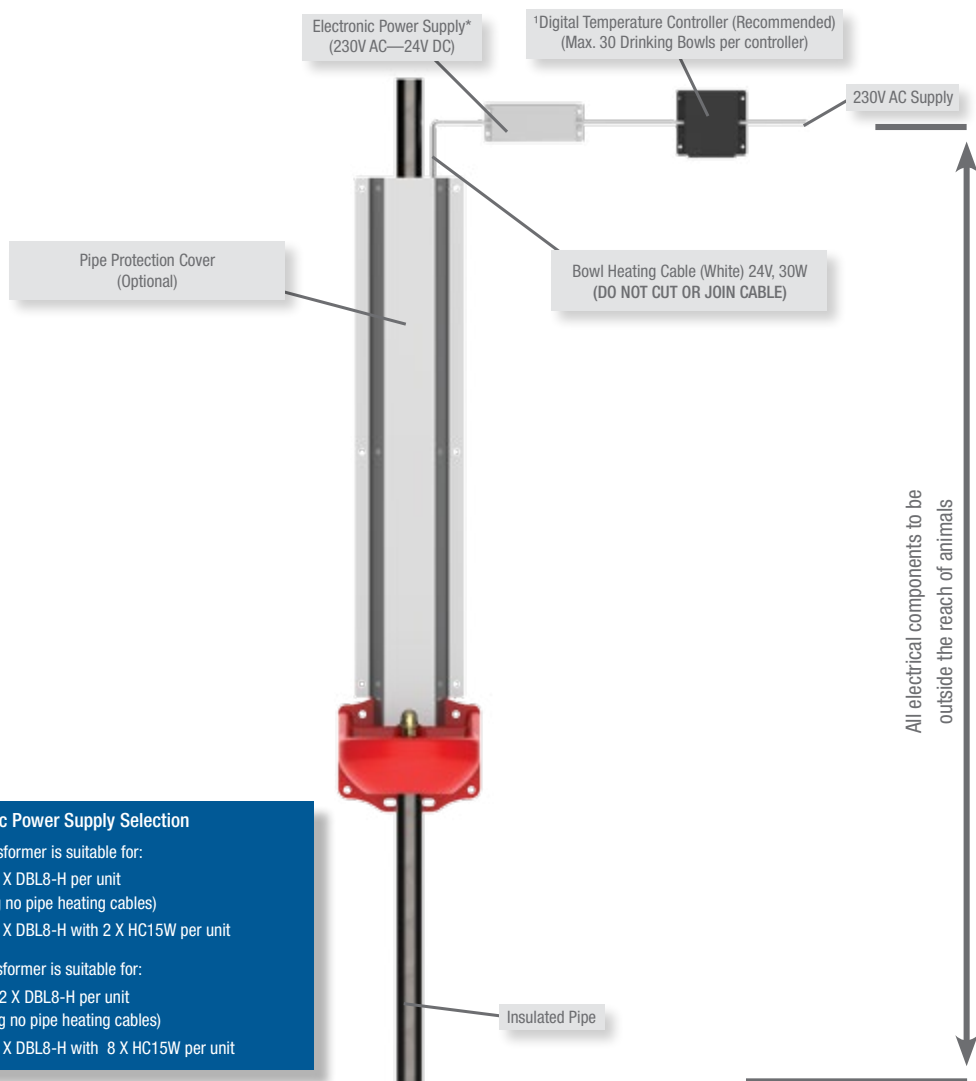


# Heated Drink Bowl

DBL8-H Installation - Option 3

*Supporting Farmers with Innovative Solutions*

## Circulating System Connection



### \*Electronic Power Supply Selection

**100W** Transformer is suitable for:

- Max. of 3 X DBL8-H per unit  
(assuming no pipe heating cables)
- Max. of 2 X DBL8-H with 2 X HC15W per unit

**400W** Transformer is suitable for:

- Max. of 12 X DBL8-H per unit  
(assuming no pipe heating cables)
- Max. of 8 X DBL8-H with 8 X HC15W per unit

\*Digital Temperature Controller will turn on and off the heating element based on the ambient temperature. If this is not used the system can be controlled manually but JFC take no responsibility for any damage caused by overheating cables.

See our full range of products on  
[www.jfcagri.com](http://www.jfcagri.com)



Milk Karts

Insulated Drinking Troughs



Hutches





## Head Office

JFC Manufacturing Co. Ltd,  
Weir Rd, Tuam, Co. Galway, Ireland

t: +353 93 24066

f: +353 93 24923

e: [info@jfcagri.com](mailto:info@jfcagri.com)

w: [www.jfcagri.com](http://www.jfcagri.com)



<https://www.facebook.com/JFCagri>



<https://twitter.com/JFCagri>